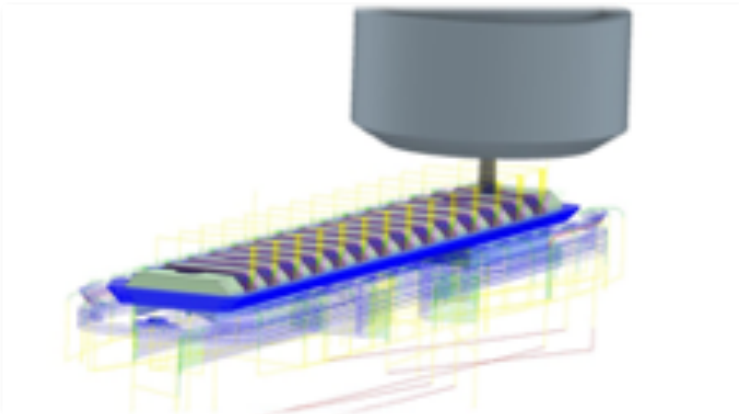
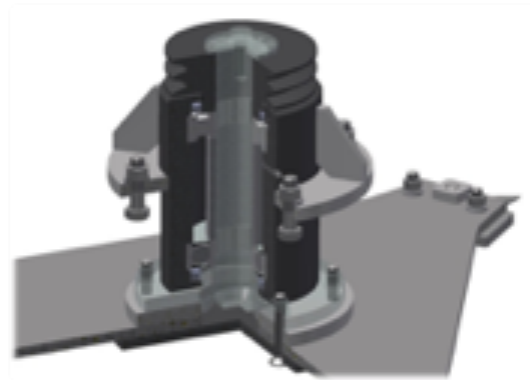


Why work with us?

Now more than ever it's important to remain competitive, efficient and innovative yet most of us are faced with limited resources in terms of staff, equipment and technology.

This is where X-WORX Co-manufacturing can help your business. Whilst you focus on growing your business through customer service and product development X-WORX can assist you with any part of the manufacturing process that you can't or don't want to do yourself.

From Concept to Prototype, R&D to Costing, Manufacturing and Shipping, we give you competitive pricing and lead times, excellent customer service and our proven track record in manufacture of well-known brands.



What services do we offer?

- Design for manufacture including 2D & 3D CAD / Drafting
- Costing and Procurement (domestic and international – licensed for import/export)
- Sheet Metal Laser Cutting & CNC Bending
- Tube Laser
- CO2 Laser – cutting and marking of non-metal sheet materials
- CNC Machining
- Metal Fabrication – Welding, Painting and Assembly
- Moulded Parts – design, prototyping and production using urethane and other polymers
- Shipping – domestic and international (import and export)

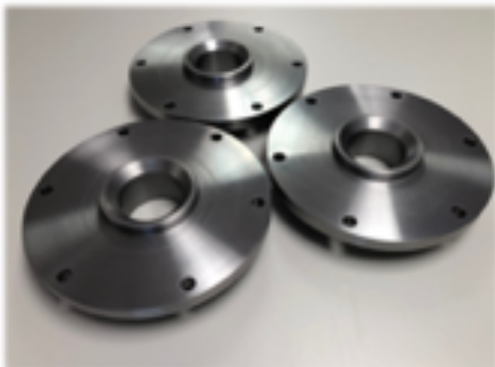
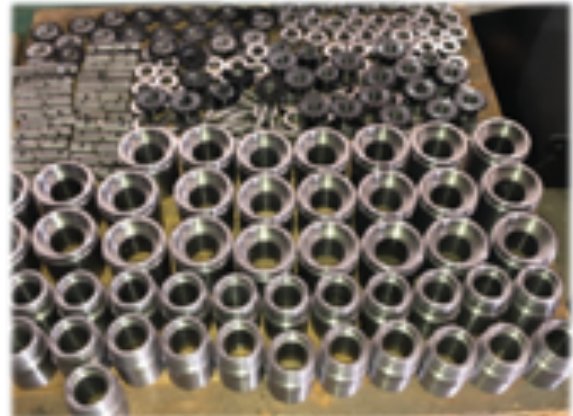
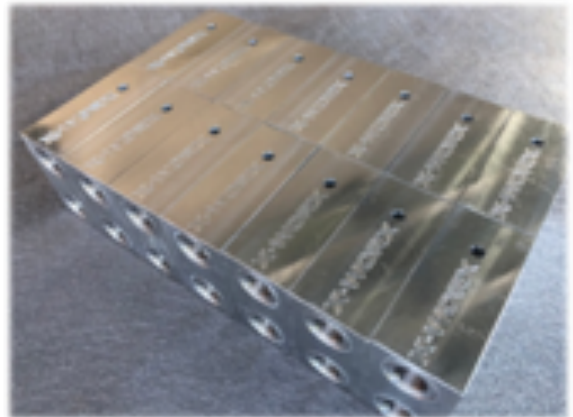
CNC Machining

Machining Services:

- CNC Milling and Turning
- CNC Broaching
- Standard operations: Drilling, Counter Sinking, Tapping, Band-saw cutting
- Finishing - Vapour Blasting, Aluminium Anodizing and MS Blackening

CNC Capabilities:

- CNC Turning: Leadwell T6
 - o Tailstock, 12 station ATC
 - o A maximum swing of 450 mm
 - o Swing over cross slide of 290 mm
 - o Maximum turning length of 420 mm
 - o A bar capacity of 51 mm
 - o Through spindle measuring 62 mm
 - o Chuck diameter of 200 mm
- CNC Milling: Haas TM-1P
 - o X Axis 762 mm
 - o Y Axis 305 mm
 - o Z Axis 406 mm
 - o Spindle Nose to Table (~ max) 508 mm
 - o Spindle Nose to Table (~ min) 102 mm
 - o Max Speed 6000 rpm
- Knuth MF 1V
 - o Travel X: 760 mm
 - o Travel Y: 290 mm
 - o Travel Z: 370 mm
 - o 4th Axis functionality
 - o Slotting/Broaching head



Tube Laser Cutting

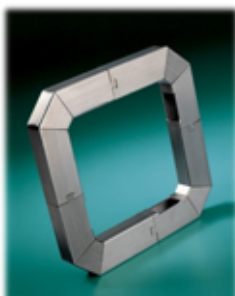
With our Tube Laser we can quickly, accurately and consistently cut a broad range of steel profiles according to your design requirements.

Advantages of Tube Laser:

- Design Flexibility: cut profile features such as square, hexagonal and elliptical holes, notches, tabs, tab slots and miters that are impossible (or totally impractical) without tube laser.
- Efficient Assembly: bend and align profiles and other parts without jigs or measuring, allowing frames and profile structures to be fabricated accurately and efficiently.
- Lower Costs: incorporation of design features for efficient assembly reduces overall fabrication time.
- Repeatability: quick, accurate and reliable profile cutting means that all of your parts will be identical resulting in higher quality end products.
- Versatile: wide range of profiles, cut shapes, materials and thicknesses

Technical Capabilities:

- 2D cutting head
- Tube Length: In: 6000 mm / Out: 5500 mm (500mm at jaw cannot be cut)
- Tube Diameter: 20 – 220 mm
- Materials: Mild Steel and Stainless Steel
- Max wall thickness: Mild Steel 10mm, Stainless Steel 6mm (enquire for thicker)
- Profiles: Round, square and rectangular tubing, channels, angle iron and other profiles (limited capability on H, T and I sections)
- Accepted file formats: Inventor, SolidWorks or STEP files (enquire for other formats)



Sheet Metal Laser and CNC Bending

Sheet Metal Laser and CNC Bending quickly, accurately and consistently cuts and bends sheet metal according to your design requirements.

Technical Capabilities Laser:

- Mild Steel up to 16mm
- Stainless Steel up to 12mm
- 1.5 x 3m sheet capacity

Technical Capabilities CNC Bender:

- 7 Axis CNC 130 Tons Hydraulic downstroke press brake
- Bending length: 3110 mm



Fabrication

- Welding
- Spray Painting (Galvanizing and Powder Coating outsourced)
- Cleaning of metals
- Assembly
- Product testing



Who we are

X-WORX is part of the IE-TEC group. We have over 20 years of experience in product development and manufacturing. IE-TEC develops, manufactures and sells machinery to the mining, construction and agricultural sectors under the EXTRAC-TEC, Y-FORCE and MEGAVATE brands. The X-WORX and TECSNAP brands focus on co-manufacturing and industrial product development and manufacturing.

Our in-house team uses the latest CAD, CAM and manufacturing technologies. Our 1500 m² factory is located in George, South Africa.



Contact Us

Please contact us or schedule a visit to our factory to discuss how we can assist you. Our experienced product development and manufacturing team is looking forward to working with you.

26 Brick Road
George Industria 6536, South Africa
Phone: +27 82 093 3938 / +27 44 874 0847
info@x-worx.co.za

